

# Expandable Telematics Device

For the most up-to-date version of this document, please visit: [goo.gl/zuLoK2](https://goo.gl/zuLoK2).

Pour la version la plus récente de ce document, visitez: [goo.gl/eZfqQo](https://goo.gl/eZfqQo).

Para la versión más actualizada de este documento, por favor visite: [goo.gl/ts2teH](https://goo.gl/ts2teH).

Die aktuellste Version dieses Dokuments finden Sie unter [gtb.page.link/qbTy](https://gtb.page.link/qbTy).

Pour obtenir la version la plus récente de ce document, rendez-vous sur : [gtb.page.link/i3mU](https://gtb.page.link/i3mU).

Para obtener la versión más actualizada de este documento, visite: [gtb.page.link/aVoN](https://gtb.page.link/aVoN).


Per consultare la versione più aggiornata del presente documento, visitare: [gtb.page.link/rqZG](https://gtb.page.link/rqZG).

Ga voor de meest actuele versie van dit document naar: [gtb.page.link/LHXR](https://gtb.page.link/LHXR).

Najnowsza wersja niniejszego dokumentu jest dostępna na stronie: [gtb.page.link/8s3t](https://gtb.page.link/8s3t).

Para obter a versão mais atualizada deste documento, visite: <https://gtb.page.link/vSHq>

The telematics device version 9 is a small form-factor device. Device installation is often straightforward and can be completed successfully by following these instructions. Harnesses are available for non-direct plug-in or specialty installations or to keep the diagnostic port exposed if desired (professional installation required).

 Read important related safety information and limitations of use following these installation instructions. Read and follow all instructions and warnings to prevent serious injury and/or vehicle damage.

Before installation, add the device to your online Fleet Management Application using the device serial number. This will ensure all data logged from point of install onward is sent to your online application.

## Preparing For Installation

Before installing your device, please document your device serial number. You will need this information at a later time to verify your installation.

1. Verify that we support your vehicle by carefully reading the device release notes at [goo.gl/fZURff](https://goo.gl/fZURff) or from the vehicle-specific installation notes at [goo.gl/MCIXt0](https://goo.gl/MCIXt0). If you have any questions or concerns please consult your Partner.
2. Ensure no dash warning lights are on in the vehicle while it is running, and all other functions such as headlamps and flashers etc. are working prior to installing the device.

**WARNING!** Some installations are not straightforward and must be completed by an Authorized Installer to ensure a secure installation. An unsecure device installation can cause poor electric and/or data connection that can lead to short circuits and fires or cause malfunctions of vehicle controls that can result in serious personal injury or significant damage to your vehicle. Some examples requiring professional installation from an Authorized Installer are:

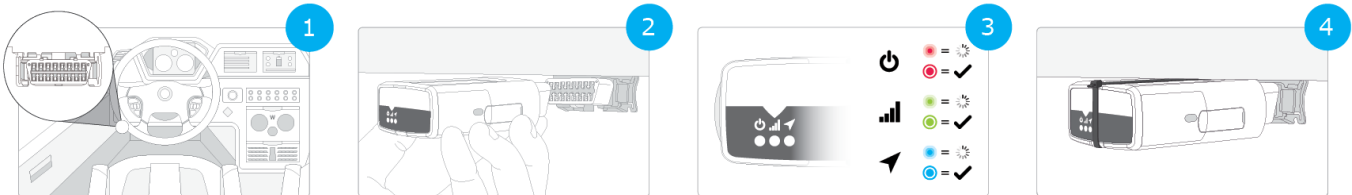
- The OBD port location is such that the device could protrude or interfere when entering or exiting the vehicle or located so could be inadvertently kicked or bumped during vehicle operation.
- The device isn't fully secured and so may be able to vibrate loose or get kicked or knocked.
- An electrical harness or additional wiring is required.
- Vehicle mounting modifications are required to secure the device (for example, removing of panels), the OBD connector has been deformed/damaged, or there is any physical damage visible to the electrical wiring.
- The device does not beep six times and power on when first installed.
- The installer questions their ability to complete a secure installation according to these instructions.

**WARNING!** Do not attempt to install, reconfigure, or remove any product from a vehicle while the vehicle is in motion or otherwise in operation. All installation, configuration, or removal must be done only in stationary vehicles which are securely parked. Attempting to service devices while the vehicle is in motion could result in malfunctions or accidents, leading to death or serious personal injury.

## Installation in Four Steps

For the instructions included with the device, please visit: [goo.gl/QnadCU](https://goo.gl/QnadCU).

Based on the warnings above, if you determine that a professional installation by an Authorized Installer is not required, the following basic installation steps can be followed.



Locate the vehicle's engine diagnostic port typically found in the driver's area at or below knee level.

**\* NOTE:** For heavy-duty trucks, always use a vehicle-specific harness where available (see [Harness Identification and Application](#) and [Harness Assessment Cheat Sheet](#)). If a heavy-duty truck-specific harness is not offered by the device manufacturer or the vehicle manufacturer, use the adapter harness (HRN-CG13S1) for any 16-pin (OBDII) installation method to avoid possible device damage.

Align the receiver end of the device with the engine diagnostic port and push in place. Ensure the device is well connected to the diagnostic port. Once connected, the device emits 6 quick beeps.

Ensure there is always a 20cm separation between the driver and the device.

Once the device is connected and receives power, the LEDs on the front of the device start blinking then turn solid once completing the actions below.

**Red LED** – Device configuration

**Green LED** – Cellular network connectivity

**Blue LED** – GPS network connectivity

**\* NOTE:** The device should be in good cellular coverage during the installation process.

The device emits two quick beeps every 60 seconds during set-up. Initial startup may take several minutes to complete.

Once all three LEDs turn solid and you hear 10 quick beeps, secure the device using the provided cable tie.

**\* NOTE:** The device starts updating when the green and blue LEDs turn solid.

**WARNING!** All in-vehicle devices and related cabling must be securely fastened and kept clear of all vehicle controls, including gas, brake and clutch pedals. This requires the use of a cable tie when securing the device or any extension harness to the OBD connector, securing both sides of the harness. If you do not use a cable tie, vibration in the vehicle can lead to a loose connection which could indirectly cause the vehicle's engine computer to fail, loss of vehicle control and cause serious injury. Inspect devices and cabling regularly to ensure all devices and cabling continue to be securely attached.

**WARNING!** If at any point after an in-vehicle device is installed a warning light illuminates on the vehicle dash or the vehicle stalls or has a marked drop in performance, shut off the engine, remove the device, and contact your Partner. Continuing to operate a vehicle with these symptoms can cause loss of vehicle control, and serious injury.

## Verify Your Installation

To check the status of the device you have installed, navigate to [installmygps.com](https://installmygps.com) and open MyInstall (public) to verify that the device is communicating. On the web page, fill in the installer information and device serial number. In the **Device status** section, you will see a green box with a **PASS** label to indicate that your installation was successful. If you see a red box with a **FAIL** label, you must check the installation and try again.

Then, provide information about the vehicle where you installed the telematics device. Once complete, click **Finish installation**.

## Important Safety Information and Limitations of Use


For the latest version of the Limitations of Use, please visit: [goo.gl/k6Fp0w](https://goo.gl/k6Fp0w).

For Conformité Européenne (CE) compliance information, please visit: <https://gtb.page.link/DT4q>.

**WARNING!** Your in-vehicle devices must be kept clear of debris, water, and other environmental contaminants. Failure to do so may result in units malfunctioning or short-circuiting, which can lead to a fire hazard and cause loss or serious injury.

**NOTICE:** Do not attempt to remove the devices from the vehicle in which they are originally installed for installation in another vehicle. Not all vehicles share compatibility, and doing so may result in unexpected interactions with your vehicle, including sudden loss of power or shutdown of the vehicle's engine while in operation, or causing your vehicle to operate poorly or erratically and cause serious injury and/or vehicle damage.

**NOTICE:** This product does not contain any user-serviceable parts. Configuration, servicing, and repairs must only be made by an authorized reseller or installer. Unauthorized servicing of these products will void your product warranty.

 **WARNING:** Cancer and Reproductive Harm - [www.P65Warnings.ca.gov](https://www.P65Warnings.ca.gov).